



TRILUX
SIMPLIFY YOUR LIGHT.

LC60 LED

www.trilux.com/LC60

LC60 LED

CONTINUOUS LINE ELEGANCE



Introduction	4-5
Modules	6-7
Optics	6-7
Mounting options	6-7
Naming convention	8-9
Accessories	10-13
Focus topics	14-15
Applications	16-17

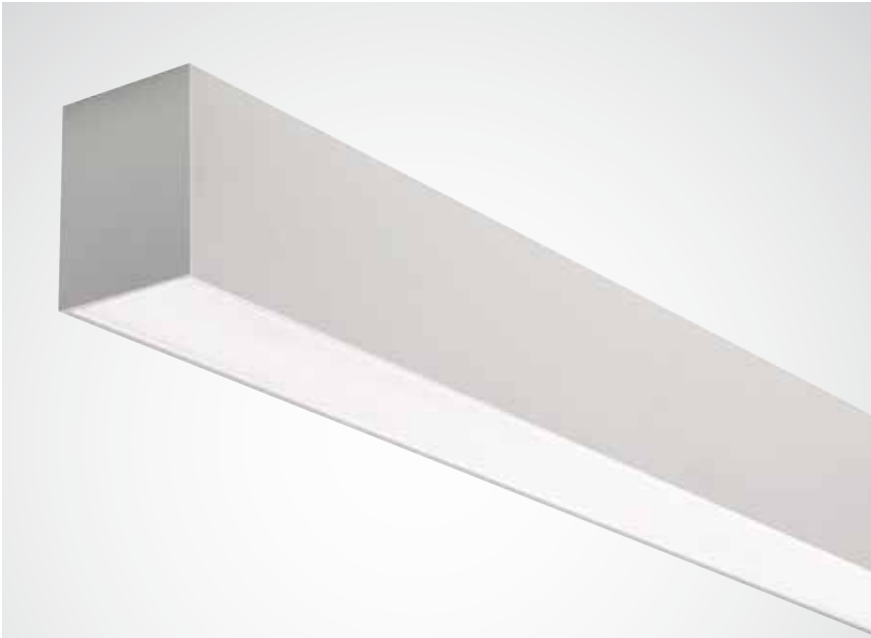
LC60 LED

CONTINUOUS LINE ELEGANCE



LIGHT LINES IN THEIR MOST ATTRACTIVE FORM

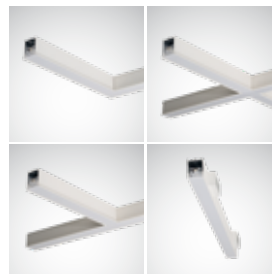
- The LC60 offers freedom of expression with versatility of design
- Intelligent modules, each with a width of 60mm, are available in different module lengths with fully illuminated T, L and X-connectors
- The light channel can be mounted horizontally or vertically, and turn corners on both axis
- The LC60 light channel system shows full flexibility in terms of mounting, either with the trimless version as a recessed channel or with a trim for plasterboard ceiling apertures. The system is also available as a surface-mounted channel and a suspended version with an indirect light component for ceiling illumination

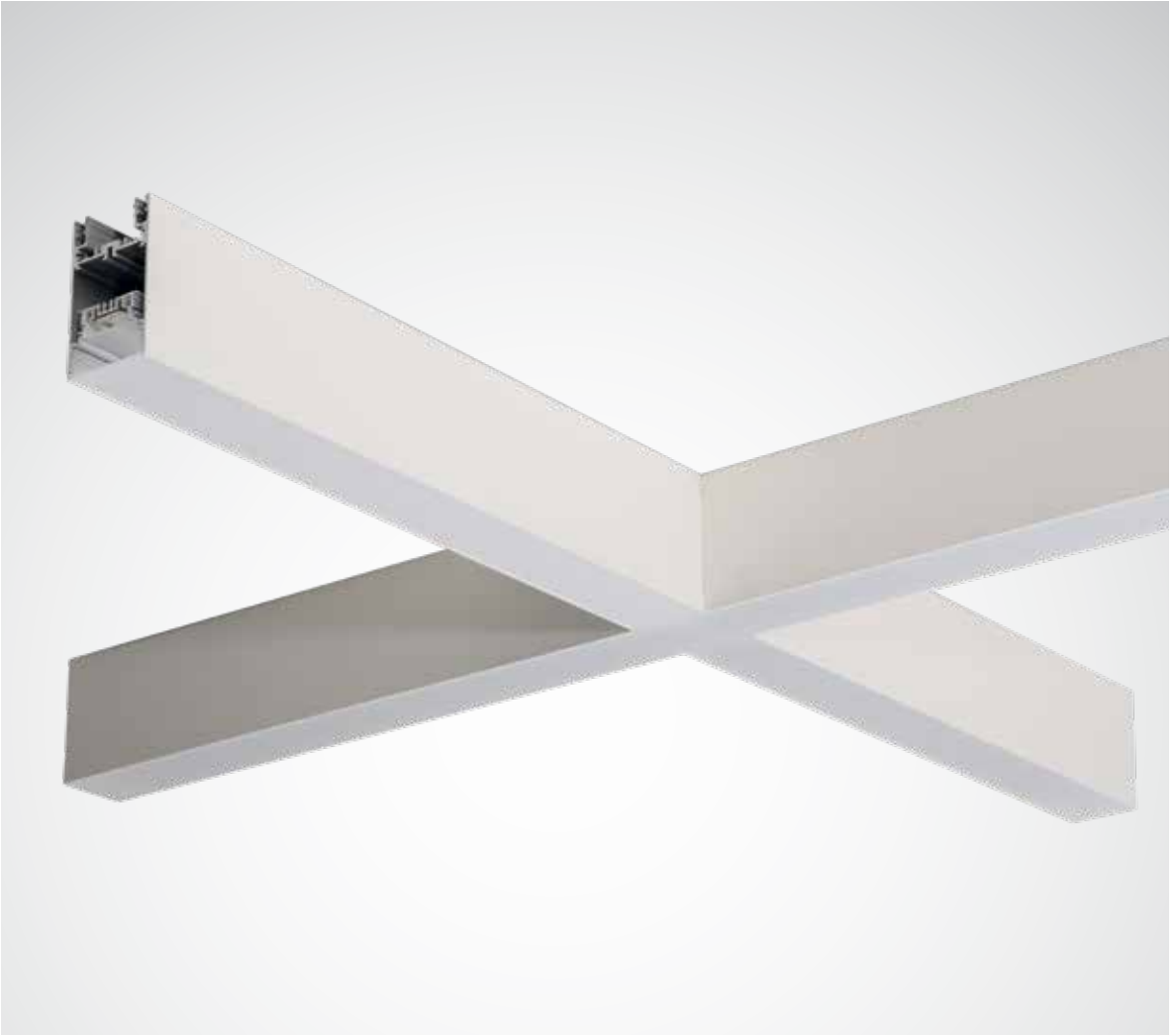
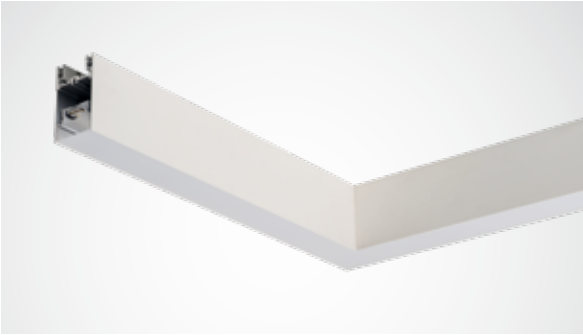


The adaptable light channel solution



Modular design flexibility





CONFIGURED QUICKLY AND SIMPLY

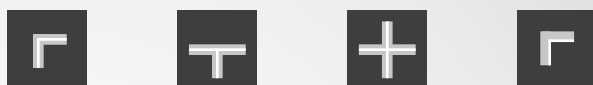
6

Mounting options



4

Construction shapes



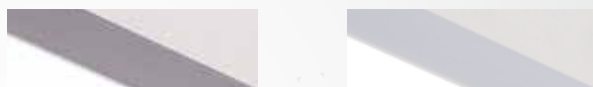
2

Light colours



2

Optical diffusers



4

Lengths



3

Body colours



www.trilux.com/LC60

NAMING CONVENTION

LC60	C	CDP	6000	-	
------	---	-----	------	---	--

Product name		Trim/mounting type		Optic		Lumen output*	
LC60	LC60	C	Classic Trim	CDP	Conical Deglaring Prism	1000	1000
		T	Trimless			1300	1300
		D	Surface Mounted			2000	2000
		W1	Wall Mounted Direct			2500	2500
		W2	Wall Mounted Direct/Indirect			3100	3100
		H	Suspended Direct/Indirect			4000	4000
						5000	5000
				OTA	Translucent polycarbonate, finely structured surface	5200	5200
						6000	6000



840 ETDD DST 01 L2244

Light colour CRI		Switching type		Frame colour/ Housing colour		Length	
830	CRI Ra80, Colour Temperature 3000K	ETDD	Electronic Transformer Dali	01	White	L564	564mm
840	CRI Ra80, Colour Temperature 4000K	ETDD DST	Dali Self Test (Dali Emergency)	03	Silver Colour	L1124	1124mm
		ETDD EM3	Emergency version with 3 hour battery life	05	Black	L1404	1404mm
						L2244	2244mm


Notes / Details:

- All bodies are supplied without end caps / without in-line joiners...
 - End caps and in-line join kits are to be ordered separately – as required for each run / system
 - End caps are ordered / supplied in pairs
 - Join kits are supplied as 1 'single' kit (2 versions – 1 for 'direct light system', and another for the 'direct/indirect' systems)
 - Recessed versions are supplied with recessing brackets
 - LC60 H is supplied with 2 wire suspensions per body
 - LC60 W1 & W2 is supplied with 2 wall mounting boxes per body
 - LC60 D (surface mounted) – can be suspended, wire suspension kit to be ordered separately (Supplied as a pair of wire suspensions – 2 suspensions per kit)
- * Additional Lumen outputs are available on request

Integral emergency:

- EM3 - Emergency version with 3 hour battery life
- DST - Dali Self Test (Dali Emergency)

Flat 90° Corner (FC90)



Flat T-Form (FT90)



Flat Cross (FX90)



90° Change Direction (IN90) - wall to ceiling



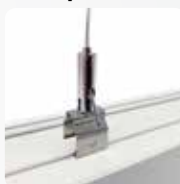
End Cap



Wire Suspension Kit



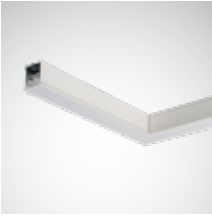
Multi Position Clip



In-line Joint kit - direct only

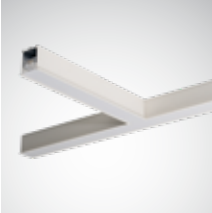


Flat 90° Corner (FC90)



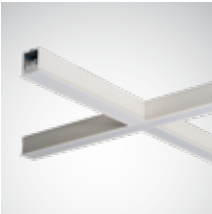
Reference	Description
LC60..... OTA FC90-830 ETDD 01	90° corner in 3000K with finely structured translucent polycarbonate optic & white finish
LC60..... OTA FC90-830 ETDD 03	90° corner in 3000K with finely structured translucent polycarbonate optic & silver finish
LC60..... OTA FC90-830 ETDD 05	90° corner in 3000K with finely structured translucent polycarbonate optic & black finish
LC60..... CDP FC90-830 ETDD 01	90° corner in 3000K with prismatic CDP polycarbonate optic & white finish
LC60..... CDP FC90-830 ETDD 03	90° corner in 3000K with prismatic CDP polycarbonate optic & silver finish
LC60..... CDP FC90-830 ETDD 05	90° corner in 3000K with prismatic CDP polycarbonate optic & black finish
LC60..... OTA FC90-840 ETDD 01	90° corner in 4000K with finely structured translucent polycarbonate optic & white finish
LC60..... OTA FC90-840 ETDD 03	90° corner in 4000K with finely structured translucent polycarbonate optic & silver finish
LC60..... OTA FC90-840 ETDD 05	90° corner in 4000K with finely structured translucent polycarbonate optic & black finish
LC60..... CDP FC90-840 ETDD 01	90° corner in 4000K with prismatic CDP polycarbonate optic & white finish
LC60..... CDP FC90-840 ETDD 03	90° corner in 4000K with prismatic CDP polycarbonate optic & silver finish
LC60..... CDP FC90-840 ETDD 05	90° corner in 4000K with prismatic CDP polycarbonate optic & black finish

Flat T-Form (FT90)



Reference	Description
LC60..... OTA FT90-830 ETDD 01	T-shaped connector in 3000K with finely structured translucent polycarbonate optic & white finish
LC60..... OTA FT90-830 ETDD 03	T-shaped connector in 3000K with finely structured translucent polycarbonate optic & silver finish
LC60..... OTA FT90-830 ETDD 05	T-shaped connector in 3000K with finely structured translucent polycarbonate optic & black finish
LC60..... CDP FT90-830 ETDD 01	T-shaped connector in 3000K with prismatic CDP polycarbonate optic & white finish
LC60..... CDP FT90-830 ETDD 03	T-shaped connector in 3000K with prismatic CDP polycarbonate optic & silver finish
LC60..... CDP FT90-830 ETDD 05	T-shaped connector in 3000K with prismatic CDP polycarbonate optic & black finish
LC60..... OTA FT90-840 ETDD 01	T-shaped connector in 4000K with finely structured translucent polycarbonate optic & white finish
LC60..... OTA FT90-840 ETDD 03	T-shaped connector in 4000K with finely structured translucent polycarbonate optic & silver finish
LC60..... OTA FT90-840 ETDD 05	T-shaped connector in 4000K with finely structured translucent polycarbonate optic & black finish
LC60..... CDP FT90-840 ETDD 01	T-shaped connector in 4000K with prismatic CDP polycarbonate optic & white finish
LC60..... CDP FT90-840 ETDD 03	T-shaped connector in 4000K with prismatic CDP polycarbonate optic & silver finish
LC60..... CDP FT90-840 ETDD 05	T-shaped connector in 4000K with prismatic CDP polycarbonate optic & black finish

Flat Cross (FX90)



Reference	Description
LC60..... OTA FX90-830 ETDD 01	X-shaped connector in 3000K with finely structured translucent polycarbonate optic & white finish
LC60..... OTA FX90-830 ETDD 03	X-shaped connector in 3000K with finely structured translucent polycarbonate optic & silver finish
LC60..... OTA FX90-830 ETDD 05	X-shaped connector in 3000K with finely structured translucent polycarbonate optic & black finish
LC60..... CDP FX90-830 ETDD 01	X-shaped connector in 3000K with prismatic CDP polycarbonate optic & white finish
LC60..... CDP FX90-830 ETDD 03	X-shaped connector in 3000K with prismatic CDP polycarbonate optic & silver finish
LC60..... CDP FX90-830 ETDD 05	X-shaped connector in 3000K with prismatic CDP polycarbonate optic & black finish
LC60..... OTA FX90-840 ETDD 01	X-shaped connector in 4000K with finely structured translucent polycarbonate optic & white finish
LC60..... OTA FX90-840 ETDD 03	X-shaped connector in 4000K with finely structured translucent polycarbonate optic & silver finish
LC60..... OTA FX90-840 ETDD 05	X-shaped connector in 4000K with finely structured translucent polycarbonate optic & black finish
LC60..... CDP FX90-840 ETDD 01	X-shaped connector in 4000K with prismatic CDP polycarbonate optic & white finish
LC60..... CDP FX90-840 ETDD 03	X-shaped connector in 4000K with prismatic CDP polycarbonate optic & silver finish
LC60..... CDP FX90-840 ETDD 05	X-shaped connector in 4000K with prismatic CDP polycarbonate optic & black finish

90° Change Direction (IN90) - wall to ceiling



Reference	Description
LC60..... OTA IN90-830 ETDD 01	90° internal corner (wall to ceiling) in 3000K with finely structured translucent polycarbonate optic & white finish
LC60..... OTA IN90-830 ETDD 03	90° internal corner (wall to ceiling) in 3000K with finely structured translucent polycarbonate optic & silver finish
LC60..... OTA IN90-830 ETDD 05	90° internal corner (wall to ceiling) in 3000K with finely structured translucent polycarbonate optic & black finish
LC60..... CDP IN90-830 ETDD 01	90° internal corner (wall to ceiling) in 3000K with prismatic CDP polycarbonate optic & white finish
LC60..... CDP IN90-830 ETDD 03	90° internal corner (wall to ceiling) in 3000K with prismatic CDP polycarbonate optic & silver finish
LC60..... CDP IN90-830 ETDD 05	90° internal corner (wall to ceiling) in 3000K with prismatic CDP polycarbonate optic & black finish
LC60..... OTA IN90-830 ETDD 01	90° internal corner (wall to ceiling) in 4000K with finely structured translucent polycarbonate optic & white finish
LC60..... OTA IN90-830 ETDD 03	90° internal corner (wall to ceiling) in 4000K with finely structured translucent polycarbonate optic & silver finish
LC60..... OTA IN90-830 ETDD 05	90° internal corner (wall to ceiling) in 4000K with finely structured translucent polycarbonate optic & black finish
LC60..... CDP IN90-830 ETDD 01	90° internal corner (wall to ceiling) in 4000K with prismatic CDP polycarbonate optic & white finish
LC60..... CDP IN90-830 ETDD 03	90° internal corner (wall to ceiling) in 4000K with prismatic CDP polycarbonate optic & silver finish
LC60..... CDP IN90-830 ETDD 05	90° internal corner (wall to ceiling) in 4000K with prismatic CDP polycarbonate optic & black finish

End Cap



Reference	Description
LC60 C EC 01	End Cap for recessed luminaires (x2) white finish
LC60 C EC 03	End Cap for recessed luminaires (x2) silver finish
LC60 C EC 05	End Cap for recessed luminaires (x2) black finish
LC60 T EC 01	End Cap for trimless recessed luminaires (x2) white finish
LC60 D/W1 EC 01	End Cap for surface mounted luminaires (x2) white finish
LC60 D/W1 EC 03	End Cap for surface mounted luminaires (x2) silver finish
LC60 D/W1 EC 05	End Cap for surface mounted luminaires (x2) black finish
LC60 H/W2 EC 01	End Cap for suspended and wall mounted luminaires (x2) white finish
LC60 H/W2 EC 03	End Cap for suspended and wall mounted luminaires (x2) silver finish
LC60 H/W2 EC 05	End Cap for suspended and wall mounted luminaires (x2) black finish

In-line Joint Kit



Reference	Description
LC60 JKD C/D/T/W1	In-line Joint Kit - direct
LC60 JKD H/W2	In-line Joint Kit - direct/indirect

Wire Suspension Kit and Multi Position Clip



Reference	Description
LC60 D WSK	Wire Suspension Kit to convert surface mounted (x2)
LC60 H WSK	Wire Suspension Kit (replacement) (x2)
LC60 D MPC	Multi Position Suspension Clip (x 2)

FOCUS TOPICS

MORE THAN JUST LIGHT



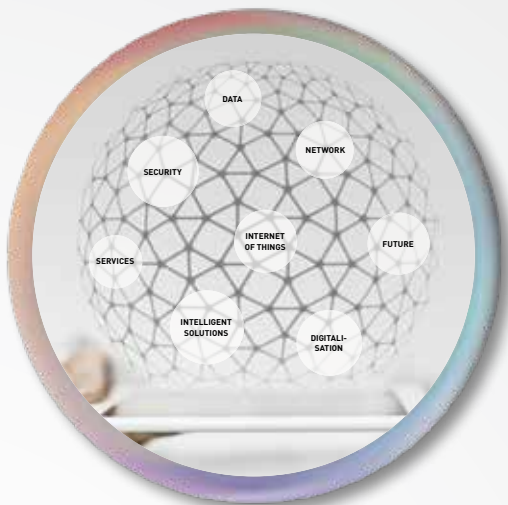
QUALITY

Customised solutions and innovative designs are part of our DNA. We have always placed much value on high-class workmanship and products with maximum quality that adapt to the individual needs of users and the diverse range of applications. TRILUX offers not only standard solutions, but in close cooperation with the customer develops atmospheric and simultaneously functional lighting concepts complying to current standards. This is ensured by premium materials, in-house developed optics, extensive data records and outstanding efficiency levels. The name TRILUX is your guarantee for best quality across the board.

SERVICES

We offer the market a comprehensive modular portfolio of services that meets all requirements for new professional lighting solutions, ranging from initial planning and financing concepts through to installation, commissioning and operation.





CONNECTIVITY

TRILUX offers innovative services such as Energy Monitoring, Light Monitoring and Predictive Maintenance, thus guaranteeing simple system monitoring. The intelligent LiveLink light management system provides users with the full benefits of connectivity.

HUMAN CENTRIC LIGHTING

The human biological rhythm depends on daylight.

By the spectral composition of light during the course of the day, HCL specifically implements light to support people. We offer intelligent and individual HCL lighting solutions. People and their needs are focused on and the biological effectiveness of light is used in a targeted and responsible way. Our HCL lighting solutions bring daylight into rooms and always consist of three components: luminaire, light control and lighting advice.



OUR APPLICATIONS

MORE THAN JUST LIGHT



TRILUX offers pioneering lighting solutions for the applications of Office, Industry, Retail, Education, Health & Care and Outdoor.

Light today offers much more than the classic functions of lighting: which is why we dedicate ourselves to such topics as New Work, Smart City, Connectivity and Industry 4.0.



TRILUX GmbH & Co. KG

Heidestraße · D-59759 Arnsberg
Postfach 19 60 · D-59753 Arnsberg
Tel. +49 29 32.3 01-0
Fax +49 29 32.3 01-3 75
sales@trilux.com
www.trilux.com

TRILUX Vertrieb GmbH

Key Account Management
Heidestraße 4 · D-59759 Arnsberg
Tel. +49 29 32.3 01-44 96
Fax +49 29 32.3 01-49 70
kam@trilux.com
www.trilux.com

TRILUX LIGHTING LIMITED

TRILUX HOUSE, Winsford Way
Boreham Interchange
Chelmsford, Essex
CM2 5PD
Tel. +44 12 45.46 34 63
Fax +44 12 45.46 26 46
info.co.uk@trilux.com
www.trilux.com

All technical data including dimensional and weight specifications have been checked carefully. Errors excepted. Possible colour deviations are due to printing processes. We reserve the right to modify in the interest of progress. Luminaires are partly shown with accessories that must be ordered separately. Images of installations may show custom manufactured luminaires. Printed on FSC-certified paper in an environmentally friendly way.

