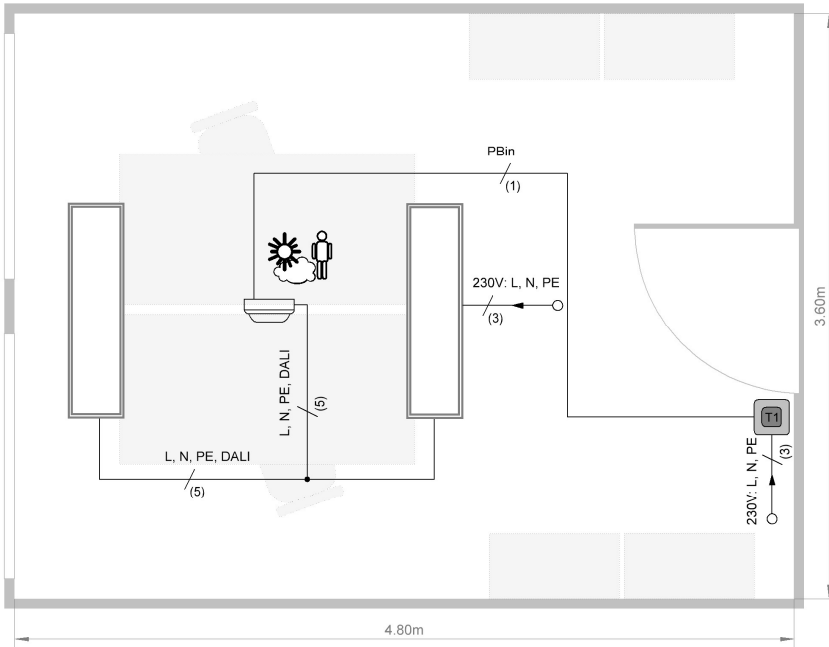


## Light control for a 2-person office

Light management system LiveLink Basic with DALI control gear units



- Daylight-dependent control of one luminaire group
- Presence detection
- Push button control ON/OFF/DIM
- Sensor setting at the sensor or via iOS/Android App
- Max. 20 Dali participants

### LiveLink Basic



#### Simple commissioning

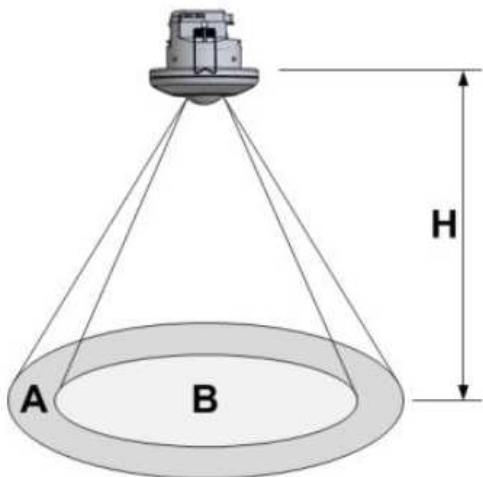
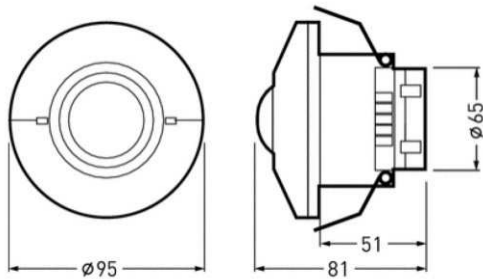
- „Plug and Play“ system – no commissioning necessary
- Preprogrammed and automatic calibration
- Connect and get started
- If required, the sensor can be readjusted or individually adjusted via app



#### Simple operation

- The lighting can be switched and dimmed by a standard push button
- Operation via bluetooth and app is also possible

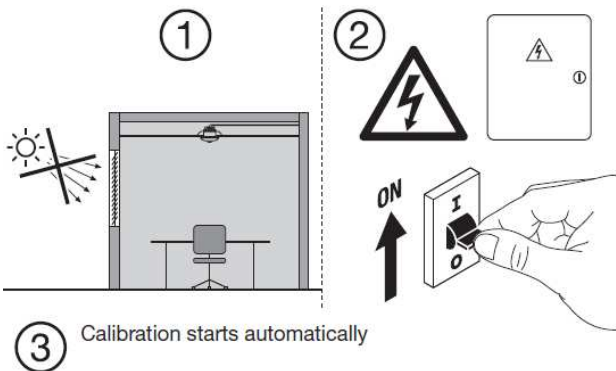
## LiveLink Basic Sensor - technical data



### TECHNISCHE DATEN

<b>Weight</b>	144g
<b>Input voltage</b>	220-240V AC +/- 10%
<b>Input frequency</b>	50/60Hz
<b>Standby power consumption</b>	< 0,3W – 1,8W
<b>Installation depth</b>	min. 55mm
<b>Hole size</b>	Ø 68mm – 80mm
<b>Ports</b>	Power (N, L) 1x DALI 1x Push button
<b>Sensor function</b>	Light sensor + presence detection
<b>Presence sensor - Detection range</b>	@ H = 2,5m    A = 6m B = 5m @ H = 3m     A = 7m B = 6m @ H = 4m     A = 8m B = 7m @ H = 5m     A = 10m B = -
<b>Light sensor sensitivity</b>	20 ... 5000 lx (angle of coverage 2x30°)
<b>DALI participants</b>	max. 20
<b>DALI output current</b>	80 mA
<b>DALI groups</b>	1
<b>Degree of protection</b>	IP20
<b>Protection class</b>	II
<b>Ambient temperature ta</b>	0 °C ... +55 °C
<b>Cable length DALI</b>	max. 300m
<b>Cable length push button</b>	max. 25m
<b>Permissible wire cross-section</b>	NYM / H05VV with 1,5mm <sup>2</sup>
<b>Bluetooth Interface</b>	Bluetooth 4.0 LE
<b>Bluetooth signal range</b>	max. 15m
<b>Smartphone</b>	Android 4.x (Samsung Galaxy S4 or higher) iOS 8.4 (iPhone 5s or higher)
<b>TK</b>	10160052
<b>TOC</b>	7219200

## LiveLink Basic - 3 commissioning options



### 1. „Plug and Play“

- NO commissioning
- Start of automatic calibration after power interruption
- Duration of calibration approx. 1 min
- The light control is calibrated to 80% of the max. illuminance
- After that the system is active



### 2. At the sensor

- Simple adjustment of the settings with the screwdriver
- The sensor can easily be readjusted by rotary potentiometers
  - Switch-off time and test mode of presence detection
  - Setpoint value for constant light control
  - Reset key for factory setting



### 2. With the App (Individual)

- Full access to all parameters with the LiveLink Basic Install App

## LiveLink Basic commissioning & operation



Android 4.x or higher



iOS 8.4 or higher

### LiveLink Basic Install

- Access to all control parameters with the LiveLink Basic Install App
- Predefined standard profiles available for all office applications
- Storage of user-defined profiles for quick adaptation of multiple rooms
- Error detection wizard with step-by-step troubleshooting guide
- Password protection for configuration and user app
- Local copy of the configuration on the smartphone
- Easily create and send password lists for entire projects



Android 4.x or higher

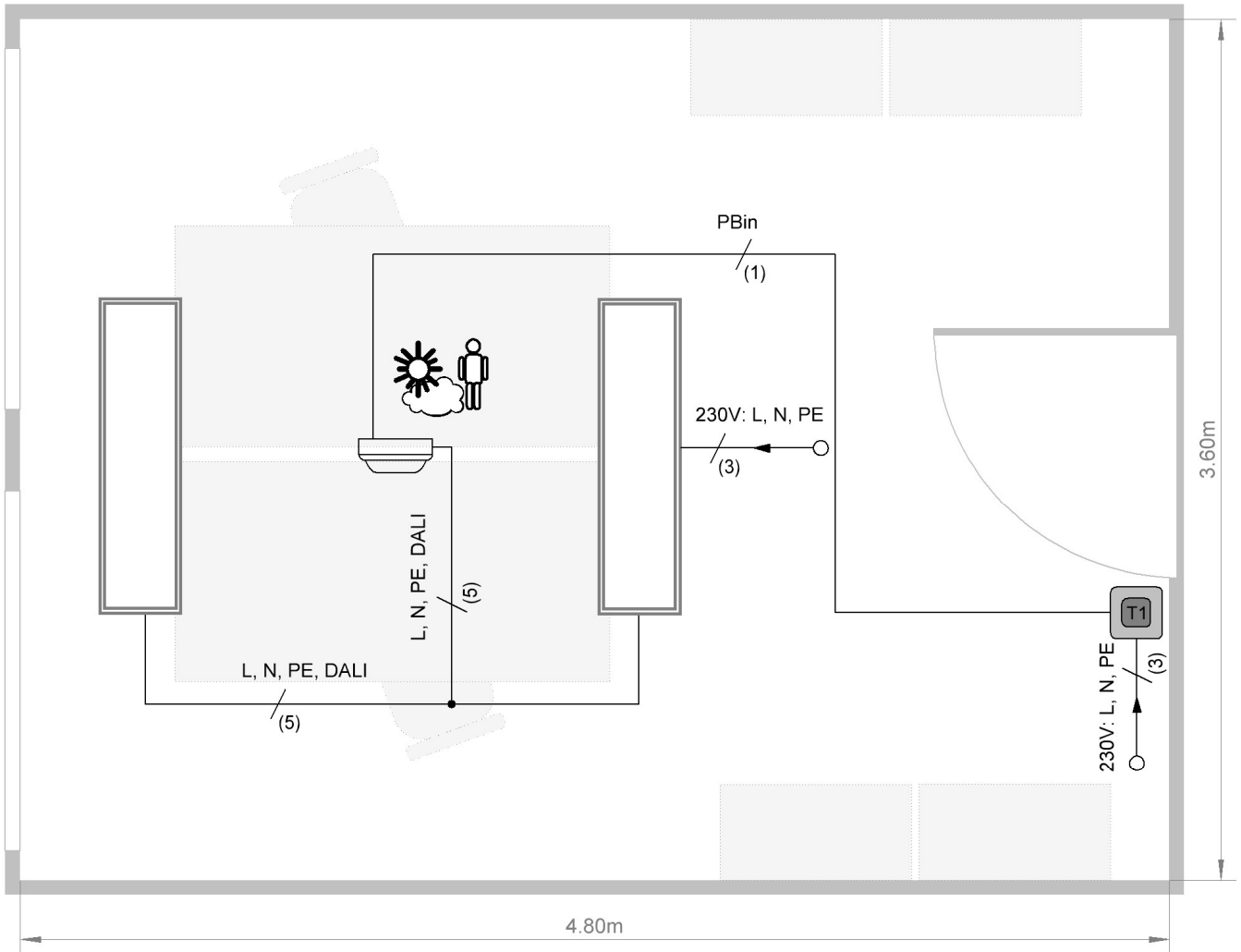


iOS 8.4 or higher

### LiveLink Basic Control

- App control of the lighting with the LiveLink Basic Control App
- Manual override of the control possible at any time
- Password protection to restrict access to the lighting system
- Automatic reconnection when opening the app

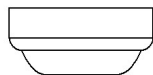
General plan:



Luminaire with Dali control unit



Push Button



LiveLink Basic Sensor



**TRIUX**  
SIMPLIFY YOUR LIGHT.

**Wiring plan:**

