



**TRI LUX**  
SIMPLIFY YOUR LIGHT.

# SYBIR MEMORIAL MUSEUM IN BIALYSTOK

Emotions painted by light, Poland



# Sybir memorial museum in Bialystok

## Emotions painted by light

For architects and installers, projects such as the Sybir Memorial Museum in Bialystok, are a real challenge. In buildings of this type, functional solutions must simultaneously reflect the artistic and historical concept of the entire building. In this particular case, it has succeeded brilliantly. The architect's vision was implemented with the support of TRILUX lighting solutions.

**Address**

Węglowa 1, 15-121  
Białystok, Poland

**Photos**

Jan Kabac / ARKON

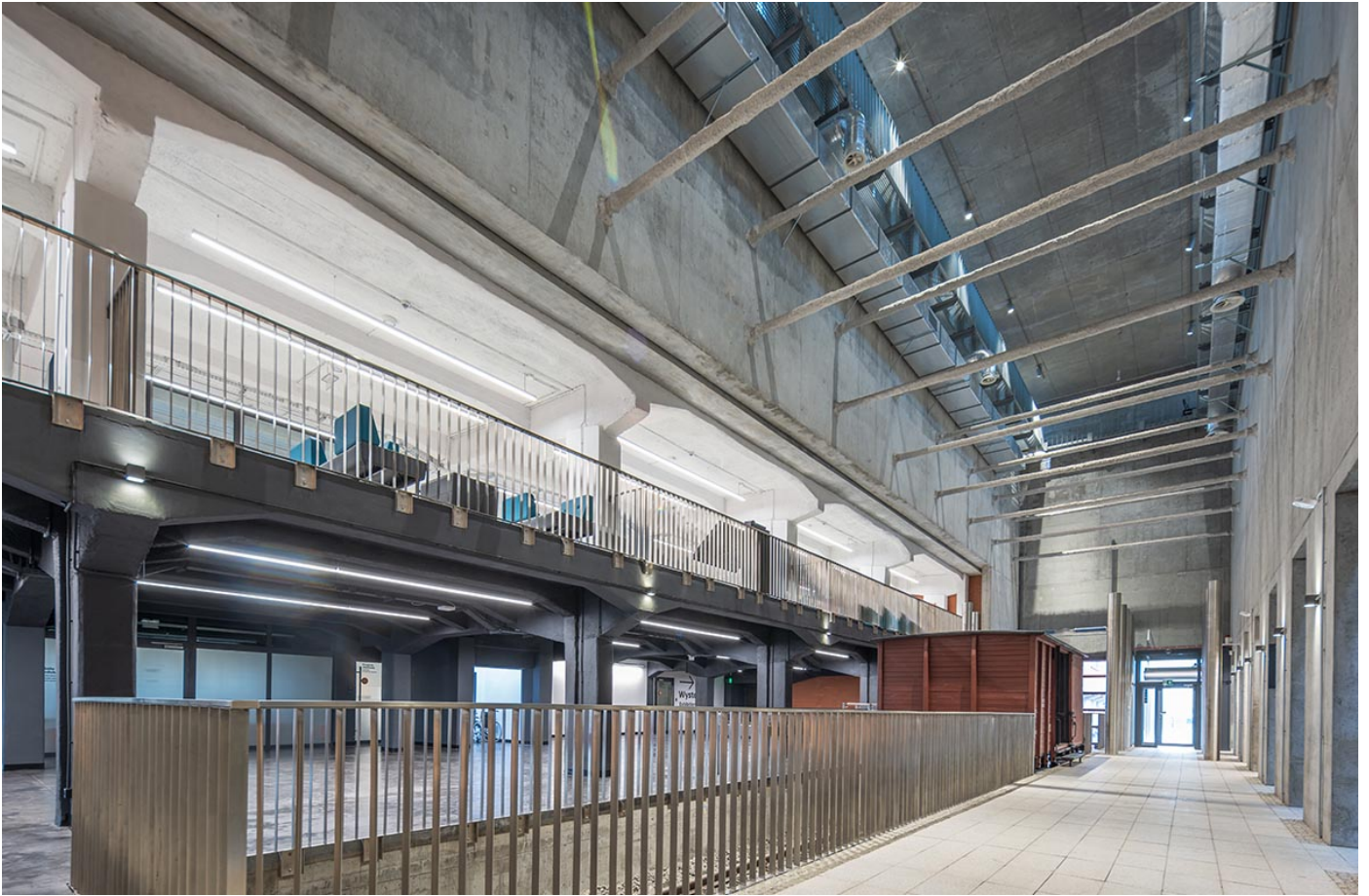
**Architect**

Maciej Lulko

**Lightplanner**

Łukasz Sierocki











## A look into the past

The museum was created to honor the memory of exiled Poles and to bring the history of forced deportations to Siberia closer to the public. For the Russians, such exiles were a way to eliminate those who resisted the occupation. How to tell the story of families who were deported deep into the cold Siberia? How to portray the inhumane journey and the conditions of hard labor? How to honor the memory of those who passed away from hunger, exhaustion and disease or by the hand of the oppressors? Architect Jan Kabac decided to paint emotions through light.

## Light painted by emotions

"When you are designing a museum, a question arises: should the architecture be a background for what is presented in the exhibitions, or should it create emotions on its own? I concluded that in this case the architecture should speak the language of symbols", says architect Jan Kabac of design office ARKON, who was responsible for the overall architectural project. The concept becomes clear as soon as you approach the museum building, especially after dusk. The path leading to the museum is outlined by [TRILUX Pareda Slim luminaires](#), which are installed low to the ground. They only illuminate the underlying pavement, which becomes a symbol of a different path - the one that the prisoners, which were sent to Siberia had to take. "Those walking along the way gain the space to reflect on the fate of those who took the road only one way", the architect explains.









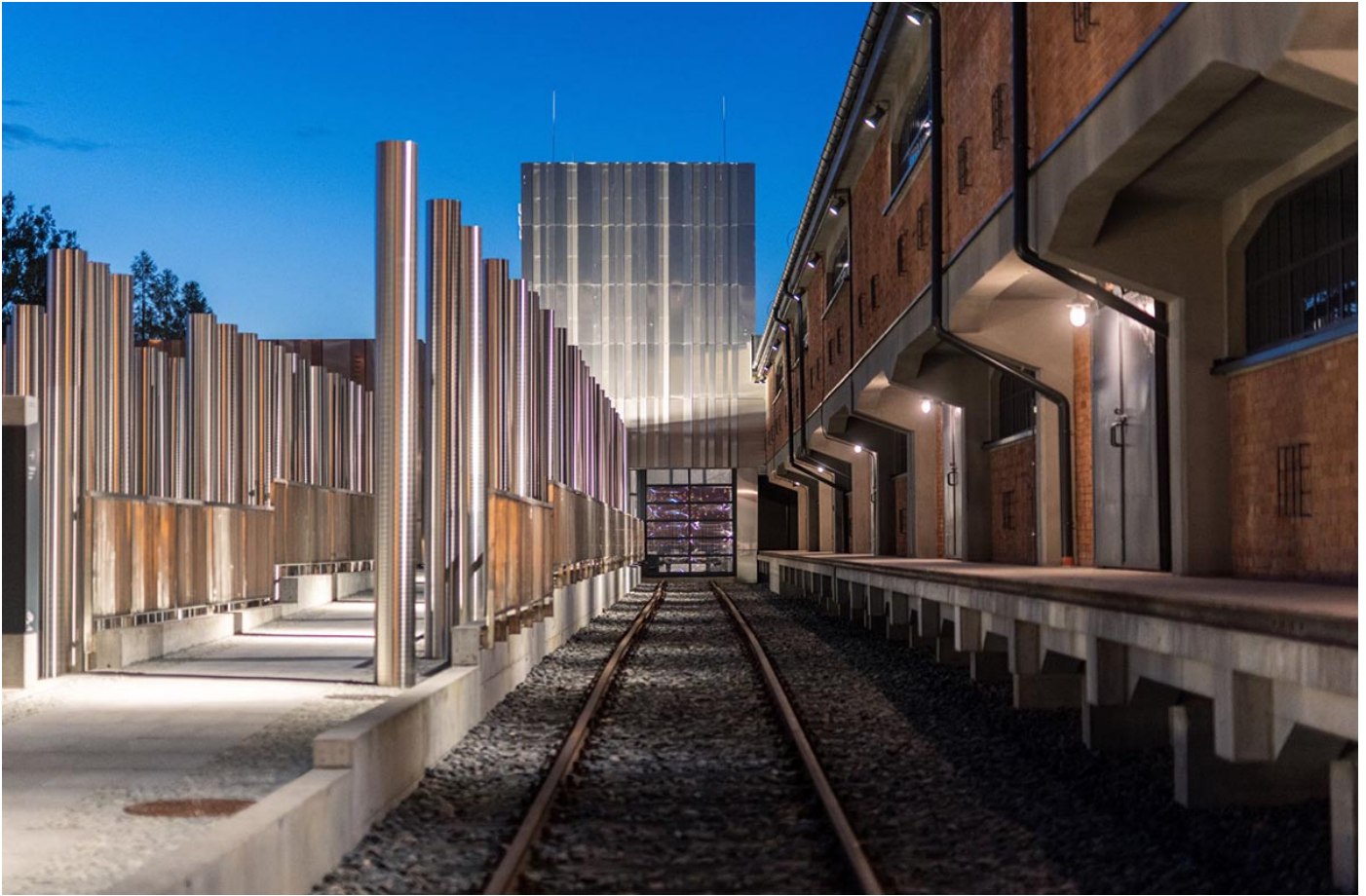




»In addition to the symbolic layer, TRILUX solutions were also installed in strictly functional areas. DALI smart luminaires, coupled with the Crestron video conferencing system, enable a number of lighting scenarios.«







## ONE-WAY JOURNEY

The Siberian Memorial Museum is located in one of the pre-war military warehouses, situated next to the railroad siding of the historic Polesie Railway Station. This is where the Soviets loaded residents into train cars in 1940, 1941 and in 1944. The architect incorporated the original architectural elements into the overall design and used them as symbolic points. Here, [TRILUX Faciella](https://www.trilux.com/gb/applications/referenzen-neu/sybir-memorial-museum-in-bialystok/) projectors were used, enhancing the drama of the illuminated objects.



"On the tracks stands an authentic Russian carriage from 1892. It is a reference to the historical deportations, which took place exactly on this railroad. The two-axle vehicle is a so-called "tiepluszka". It stands inside the Museum building. It acts as a symbolical gate through which all visitors pass, and at the same time brings to mind the memory of the dramatic moment when the deportees said farewell to their former lives."





## LUMINAIRES – SMART AND FUNCTIONAL

"It is also interesting to note that the reflectors in the LED profiles, along with the light source, were mounted using magnetic mounts. This significantly shortened the luminaire assembly process. The entire lighting project was completed in about 8 months", - concludes Michal Siemion of ZETO S.A, who was responsible for the lighting project.

## MORE PICTURES



## USED PRODUCTS



### **FACIELLA**

One spotlight. Three sizes. All possibilities.