



TRI LUX
SIMPLIFY YOUR LIGHT.

WITTCHEN

New standards in sustainability,
Poland

Wittchen

New standards in sustainability



Address

Gdańska 60, 05-152
Cząstków Polski, Poland





TRILUX
SIMPLIFY YOUR LIGHT.







Comprehensive lighting modernization

The collaboration began in 2017 with the development of a lighting concept for WITTCHEN's new 3,000 square meter office building and outlet. In addition to high lighting quality for employee satisfaction and safety, an attractive luminaire design and high energy efficiency were mandatory.

A total of 544 TRILUX lighting solutions were installed in the offices, including our award-winning [Solvan Flow](#) pendant luminaires, which create an elegant appearance for the interiors. The outlet was equipped with 60 [Canilo](#) track spotlights to optimally showcase the luxury manufacturer's exclusive products.

WITTCHEN was extremely satisfied with the implementation, so TRILUX was also involved in the subsequent project phases. Almost 300 E-Line linear lights are installed throughout the new 8,500 square meter logistics center. With energy efficiency of up to 190 lm/W and a service life of 70,000 hours, these guarantee permanently low operating costs and also score highly in terms of lighting quality.

The customer also opted for E-Line in combination with [Mirona Fit](#) high-bay luminaires and [Deveo Fit](#) moisture-proof luminaires for the refurbishment of its warehouse. All luminaires in the warehouse are controlled via the [TRILUX LiveLink](#) light management system.









TRILUX
SIMPLIFY YOUR LIGHT.











»Throughout the implementation of the various phases, we continuously addressed challenges. We met the client's needs by proposing solutions that would be attractive to them as an investor in the long term,«



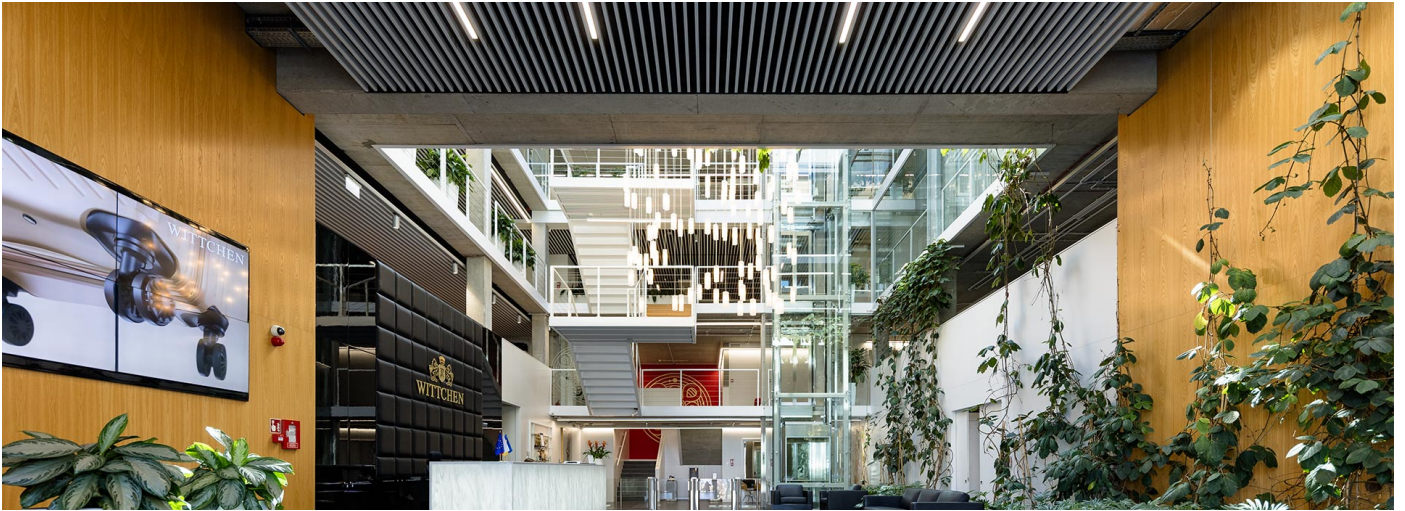
IMPRESSIVE RESULTS

The project's results are remarkable. Thanks to the lighting modernization in the warehouse and the implementation of a lighting control system, both lighting quality and electricity consumption were improved, with a reduction of 120 MWh per year. Due to the proven energy efficiency, WITTCHEN received Energy Savings Certificates, which enabled an even faster return on investment. The reduction in peak power consumption also made it possible to set up a dedicated charging station for electric vehicles on the company premises for public use.



"We are a demanding customer who values the quality of the products and services we receive. When evaluating potential lighting suppliers, various factors such as product quality, punctual delivery, competitive prices, and technical support were taken into account. TRILUX met our expectations," says Hubert Pienkowski from WITTCHEN, who is pleased with the cooperation.

MORE PICTURES



USED PRODUCTS

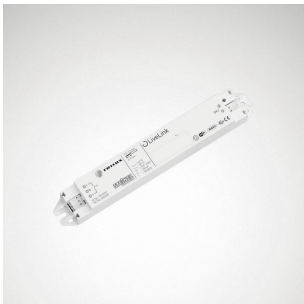


LENTY TRACK

The filigree lens spotlight



DEVEO FIT



LIVE LINK WIFI

TRILUX LiveLink – when intelligence comes to light



SOLVANF H

The all-round talent for more planning flexibility



E-LINE

From experience. From the market. For the future.



MIRONA FIT

Minimum dimensions with maximum power