



**TRI LUX**  
SIMPLIFY YOUR LIGHT.

# GLEBE FARM SCHOOL

Case Study, United Kingdom

# Glebe Farm School

## Case Study

Milton Keynes has recently welcomed a new intake of students to its first-ever fossil-free school. The completely gas-free all-years facility also uses the latest LED luminaires to keep harvested energy use to the minimum, creating a modern, green learning environment in the heart of the community.

Our reliance on gas, oil and coal is wreaking havoc on the natural environment. If we don't accelerate the transition to clean energy now, our climate goals will no longer be achievable. If factories, businesses, schools, hospitals, homes, and transportation switch to clean energy sources, they're not just saving the environment; they're saving resources and gaining independence from a volatile energy market.

A perfect example is the innovative newly built Glebe Farm School in the parish of Wavendon in the South East of Milton Keynes. An all-through school with 1,569 school places for pupils aged 5 to 16, a nursery and a workplace for 170 staff members, Glebe Farm School is located on an area larger than 13 football pitches at the heart of a new community.



### Address

MK17 8SF England,  
United Kingdom



### Architect

Synergy Architects



### Lightplanner

Munro Building Services



Completely gas-free, it uses air source heat pumps which absorb heat from the outside air and provide all the energy needed for air and hot water. All lighting comes from ultra-efficient LED luminaires from TRILUX Lighting, whilst hundreds of solar panels generate power for the building.

TRILUX luminaires are found throughout the building. The scheme focuses on the diverse needs of pupils, students, and teachers; and covers the complete spectrum of educational applications from the classrooms to the sports hall. The low-energy design uses a mix of Siella, Amatrix, Agira Plus, Arimo Fit, 74RS, Finea, Skeo Curv, Mirona Fit Sports, Olevion Fit, ERP and Luter C luminaires.



TRILUX LED luminaires also score highly from an operational point of view, protecting education budgets and the environment with low power consumption and maintenance costs.

Michael Guppy, Preconstruction Manager, Munro Building Services, comments, "We have been using Trilux products for over ten years now, the quality of the fittings is excellent. Using one manufacturer for projects like this allows the scheme to be workable throughout the project and assists the end user, as they only have to go to TRILUX for any additions or replacements. We find working with TRILUX helps us deliver an overall project solution."



It's been estimated that green energy could save this school up to £100,000 a year. Since completion, the school has become a national benchmark for future school buildings.







»We have been using TRILUX products for over ten years now, the quality of the fittings is excellent. Using one manufacturer for projects like this allows the scheme to be workable throughout the project and assists the end user, as they only have to go to TRILUX for any additions or replacements. We find working with TRILUX helps us deliver an overall project solution.«











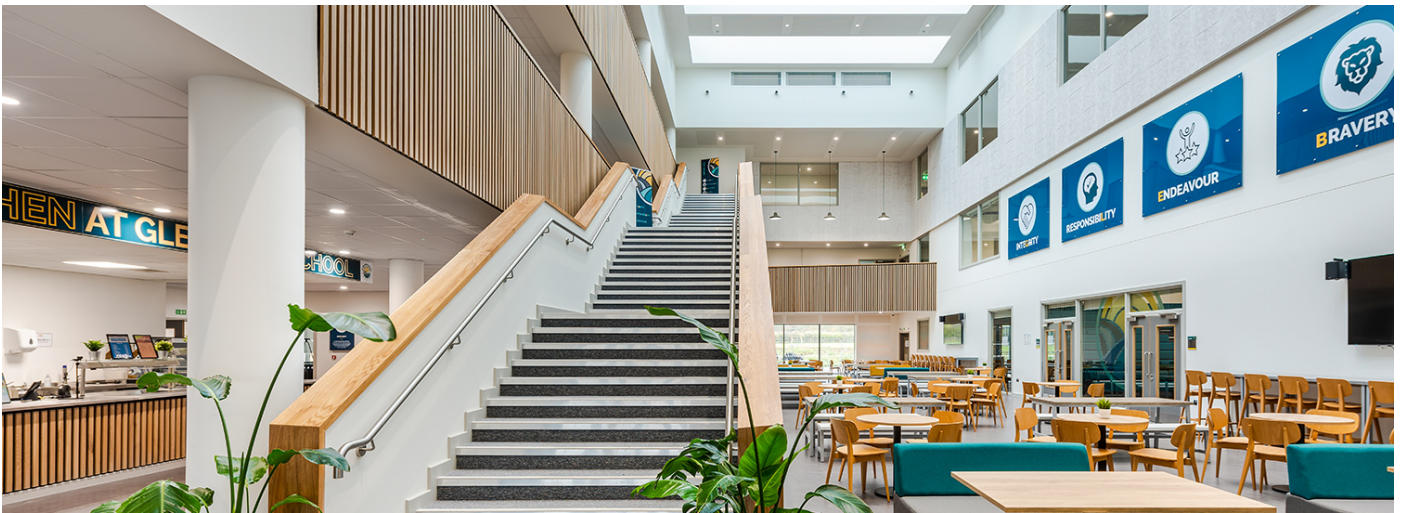








## MORE PICTURES



## USED PRODUCTS



### **SKEO CIRC**

A well-rounded affair for areas around buildings



### **MIRONA FIT-SPO**

Minimum dimensions with maximum power



### **LUTERA**

The complete range for perfect presentations



### **SPARE PARTS**



## AMATRIS

Simple, flexible, quick



## ARIMO FIT

PLANAR LIGHT IN A NEW DIMENSION



## SIELLA

The standard in flexible office lighting



## AGIRA PLUS

Flexible power in the ceiling



## OLEVEON FIT

Simply planned. Flexibly refurbished. Fit for the future.