

## PROJECT: VERKEHRSLEITZENTRALE



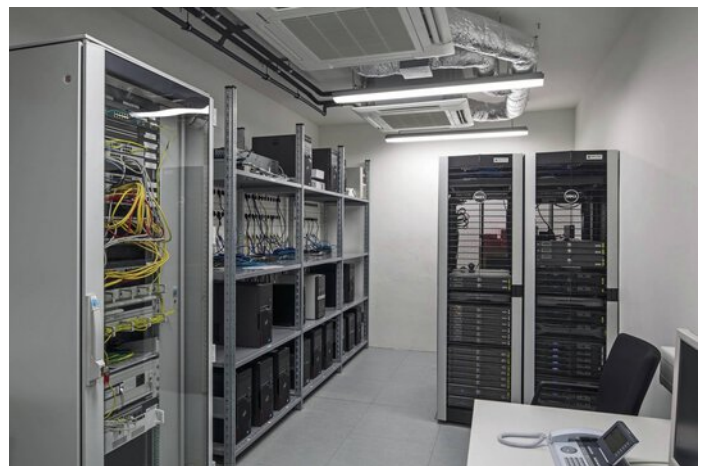
### Project information

City: 40545 Düsseldorf / Germany

---

## PROJECT DETAILS

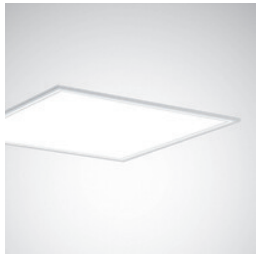
### Project images







## Products used



### **Belviso C1 LED ceiling-recessed luminaire**

The Belviso luminaire family represents high quality lighting solutions together with glare-free light and unusual lighting effects. The design of the Belviso Cassette as a pure surface is enlivened by the precisely delineated light contour. The colour-illuminated light frame is available optionally and achieves an emotional upgrading of the lighting design. Five expressive alternatives mean that room-specific or individual colour codings can be selected.

---



### **DALI Poti**

DALI rotary potentiometer for switching and dimming of lighting, control of max. 25 DALI participants (expandable to 50 participants with parallel operation of a second DALI potentiometer), up to 4 operating panels

---



### **DALI repeater**

Control components for operation via Touch Dim (push button input for switching and dimming) and for DALI system expansion with a further 64 DALI participants in broadcast mode, cascading is possible

---



### **OccuSwitch OS**

The sensors for ceiling installation are designed for presence detection. They switch a luminaire group over a relay. They can be used as single sensors or together with other sensors.

---