



## PROJECT: KIRCHE UND KULTURZENTRUM



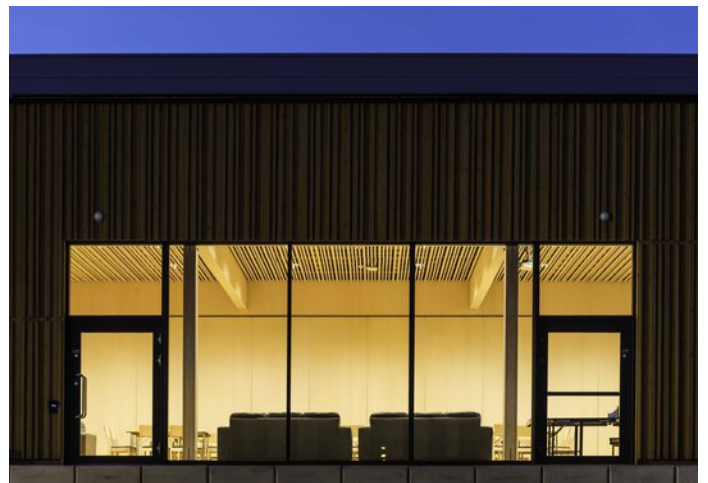
### Project information

Architect: L2 Arkitekter AS

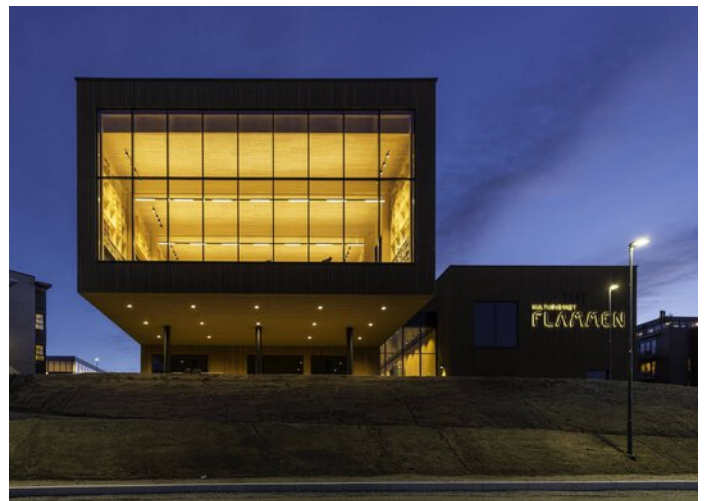
City: 1482 Nittedal / Norway

## PROJECT DETAILS

### Project images





















## Products used



### **8841 LED bollard**

The 8841 LED product range scores with a characteristically high-profile appearance and a diversity of luminaire versions. Various wide light distributions and different luminous flux packages provide maximum visual comfort and guarantee perfect illumination, enabling large spacing between the bollards.

---



### **Faciella**

Highlighting objects, surfaces and buildings – with Faciella LED the path to perfect light was never as simple. Completely different lighting tasks can be solved with a uniform design. The high-performance and energy-efficient projector is available in several construction sizes and with various luminous flux packages and beam angles for flexible use. The manually adjustable inclination angle simplifies precise targeting of the projector.

---



### **Inperla Ligra Plus C05 LED downlight ceiling cutout Ø 140 mm**

Refurbishing was never so simple as with the easy-mounting and flexible Ligra Plus LED. With the cladding covers, the luminaire fits into nearly all existing ceiling cutouts and if required can be connected via mains through-wiring from luminaire to luminaire to save time. The Ligra Plus LED is available with different luminous flux packages and beam characteristics for the optimal illumination of a wide variety of rooms. All versions fulfil maximum demands for visual comfort and energy efficiency. And thanks to the diverse design versions, the Ligra Plus LED always blends harmoniously into the interior design.

---



### **Publisca**

Die schlanke Leuchtenfamilie Publisca LED verbindet moderne Technologie mit einer unverwechselbar zeitlosen Formsprache. Dank eines cleveren Baukastensystems lassen sich Leuchtenkopf-Design, Lichtpunkthöhe, Lichtfarbe, Abstrahlcharakteristik und Smartness maßgeschneidert an das Projekt anpassen. Auch nachträgliche Umrüstungen sind über zwei optionale Zhaga-Schnittstellen einfach umgesetzt.

---