

PROJECT: MACRON SPORTSWEAR HEADQUARTER



Project information

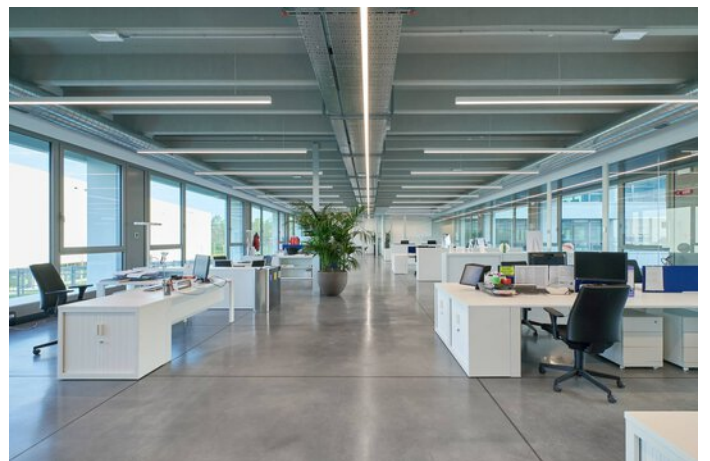
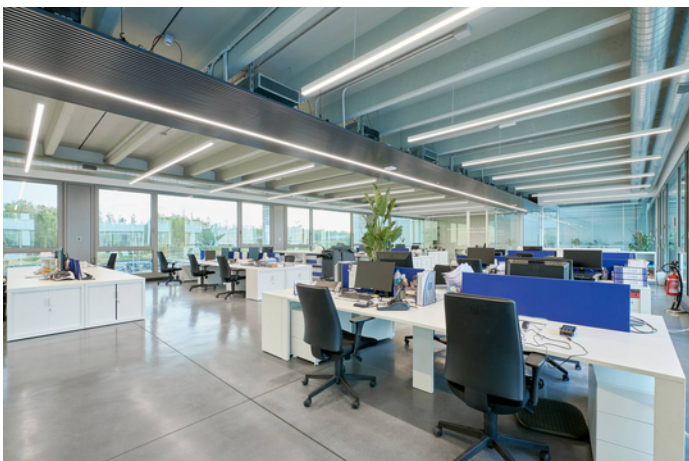
Architect: Studio Lenzi e Associati

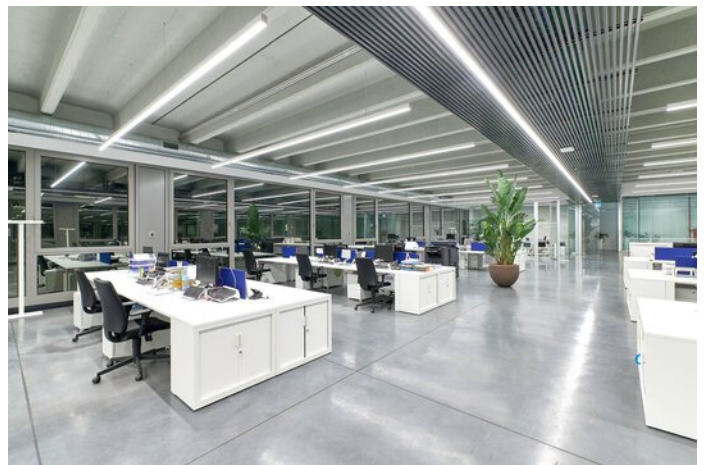
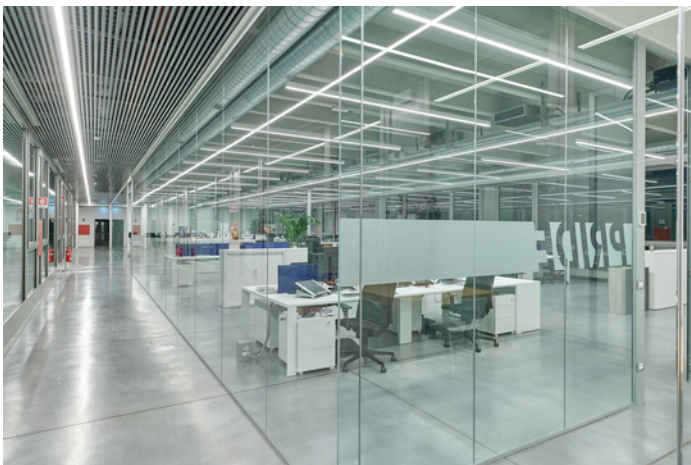
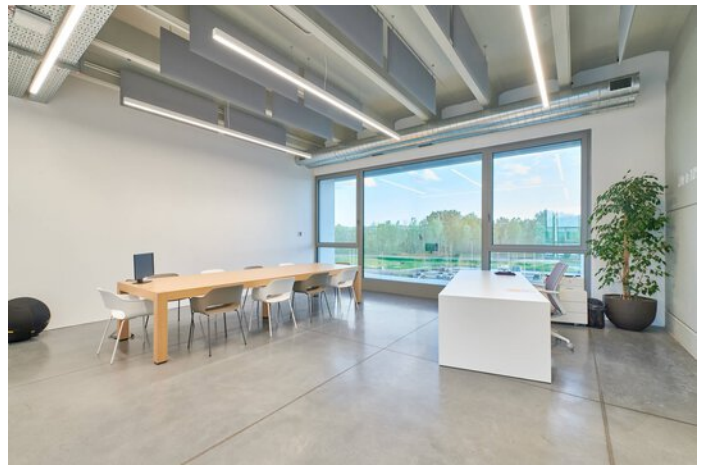
City: 40053 Crespellano / Italy

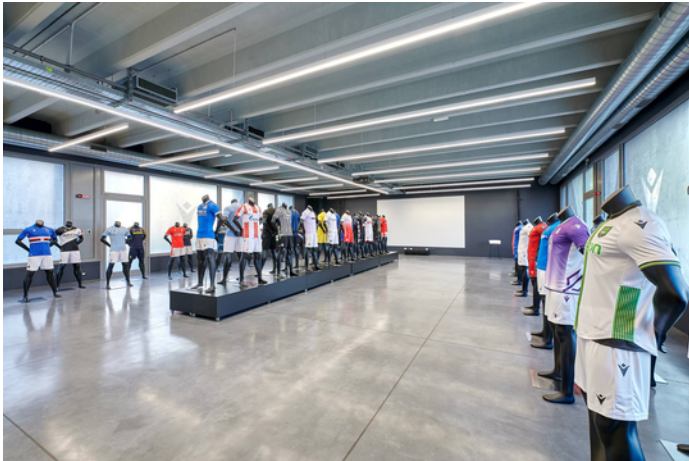
PROJECT DETAILS

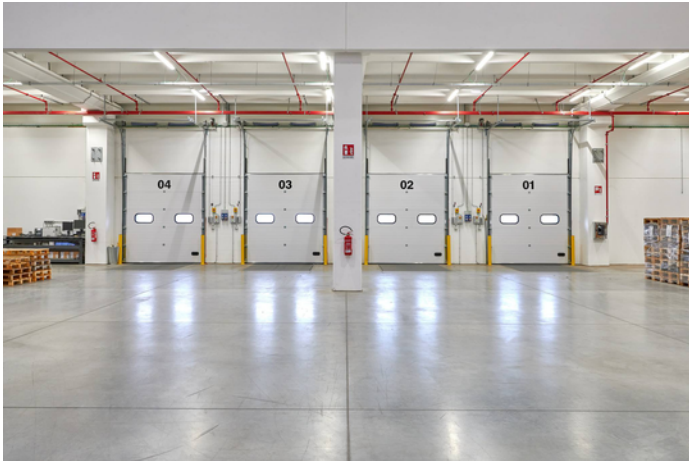
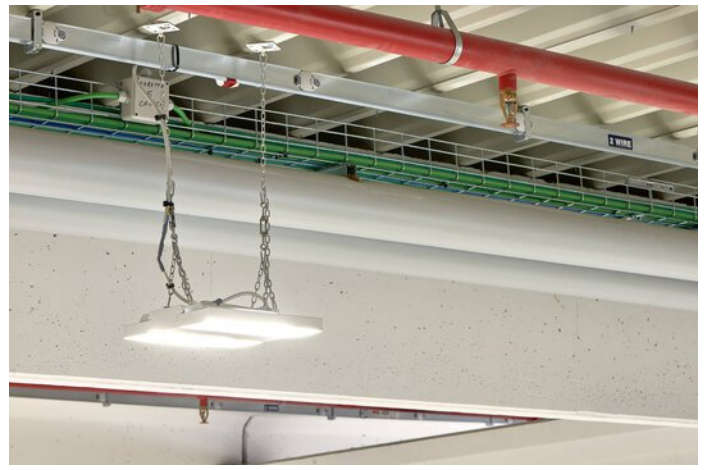
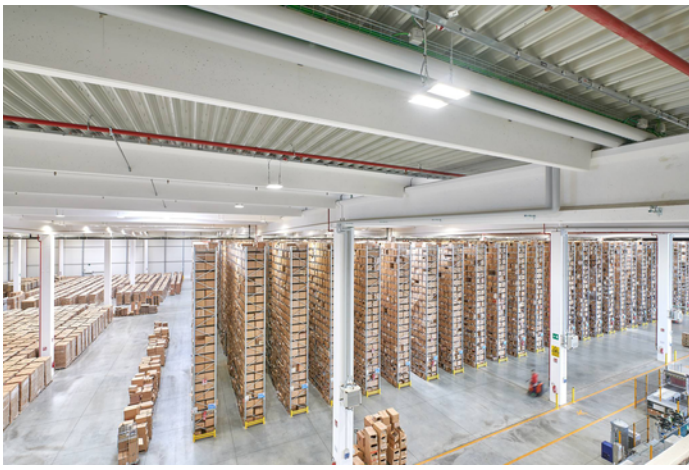
Project images











Products used



Jovie

Thanks to Multi-Lens Technology (MLT^{IQ}) and various switching variants, Jovie LED can be perfectly adapted to individual project-related requirements, e.g. as a Smart Lighting Ready variant with Zhaga interfaces for a light management system. Also ideal for later retrofitting.



Faciella

Highlighting objects, surfaces and buildings – with Faciella LED the path to perfect light was never as simple. Completely different lighting tasks can be solved with a uniform design. The high-performance and energy-efficient projector is available in several construction sizes and with various luminous flux packages and beam angles for flexible use. The manually adjustable inclination angle simplifies precise targeting of the projector.



Combial LED



Lutera ground recessed luminaires

The Lutera LED ground recessed luminaire from TRILUX is a multi-talent for outdoor use: it lends prestigious facades a modern appearance and at the same time provides safety for path zones around buildings. Thanks to high-quality components, the luminaire has a long service life and low maintenance requirements.



Oleveon Fit surface-mounted luminaire IP66

Oleveon Fit LED with its innovative 3-D prismatic technology creates outstanding, glare-free and energy-efficient light. The high product quality, diverse range of variants and the intelligent LiveLink light management system lifts the damp-proof lighting to a new level.



Nextrema LED surface-mounted luminaires IP66

Ice cold or boiling hot, damp or dusty – no problem for the Nextrema LED with its robust die-cast aluminium body in cold stores, food production facilities, distribution centres or car parks at temperatures of -30°C to +35°C. In addition to its robust exterior, the luminaire's quality of light is also impressive throughout: the light is pleasantly homogeneous, glare-free and especially energy-efficient. Installation is also particularly simple and time-saving thanks to a number of clever functions.



E-Line NEXT modular continuous line

Still in the portfolio for the refurbishment and expansion of existing systems: the E-Line Fix continuous line system with trunking that has been tried and tested for many years. This ensures continuity and investment security for our customers and E-Line users - and is what the TRILUX after-sales promise stands for.



Luceos S free-standing luminaire

Excellent light and an extremely flat luminaire head with separately controllable direct and indirect components: with the Luceos free-standing luminaire, office workplaces can be illuminated without ceiling lighting in accordance with standards and in the attractive design typical of the product range. The result: maximum flexibility along with individual light.

Finea C LED recessed ceiling luminaire

Holistic solutions instead of patchwork: thanks to versatility in photometrics and installation type, even extensive projects can be realised with a single luminaire range. This creates an attractive, harmonious overall impression.



Finea H LED suspended luminaire

Holistic solutions instead of patchwork: thanks to versatility in photometrics and installation type, even extensive projects can be realised with a single luminaire range. This creates an attractive, harmonious overall impression.