

PROJECT: PON CAT (PON EQUIPMENT AS)



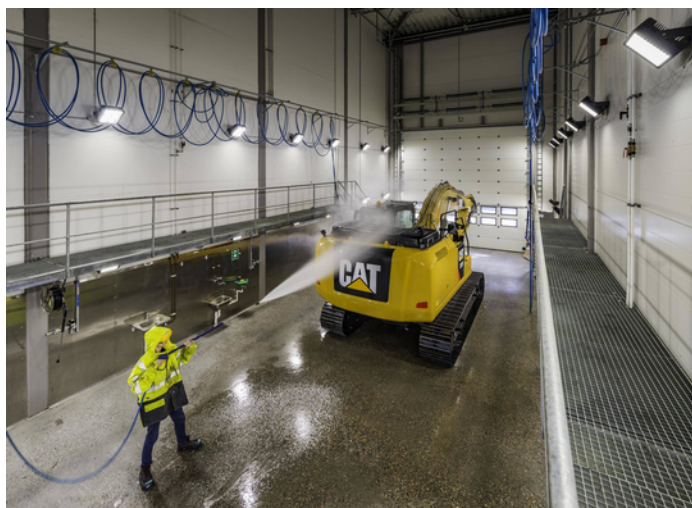
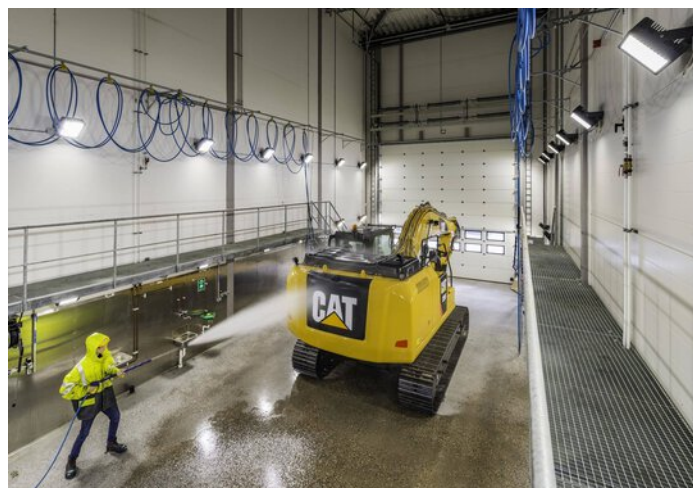
Project information

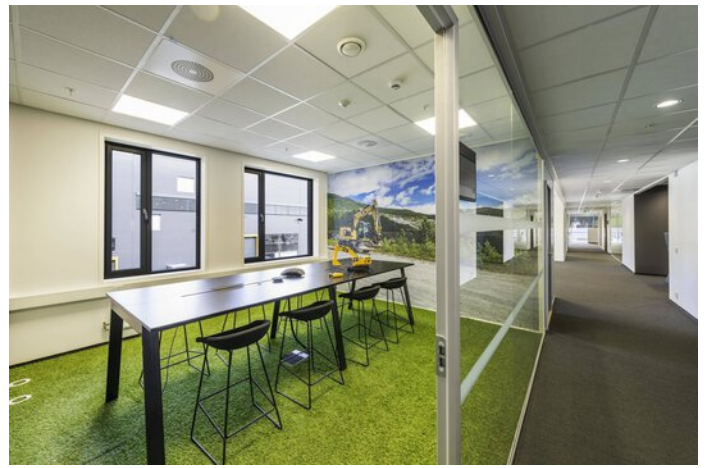
Architect: Astrup Hellern AS

City: 2020 Skedsmokorset / Norway

PROJECT DETAILS

Project images











Products used



Publisca

Die schlanke Leuchtenfamilie Publisca LED verbindet moderne Technologie mit einer unverwechselbar zeitlosen Formsprache. Dank eines cleveren Baukastensystems lassen sich Leuchtenkopf-Design, Lichtpunkthöhe, Lichtfarbe, Abstrahlcharakteristik und Smartness maßgeschneidert an das Projekt anpassen. Auch nachträgliche Umrüstungen sind über zwei optionale Zhaga-Schnittstellen einfach umgesetzt.



Inperla Ligra Plus C05 LED downlight ceiling cutout Ø 140 mm

Refurbishing was never so simple as with the easy-mounting and flexible Ligra Plus LED. With the cladding covers, the luminaire fits into nearly all existing ceiling cutouts and if required can be connected via mains through-wiring from luminaire to luminaire to save time. The Ligra Plus LED is available with different luminous flux packages and beam characteristics for the optimal illumination of a wide variety of rooms. All versions fulfil maximum demands for visual comfort and energy efficiency. And thanks to the diverse design versions, the Ligra Plus LED always blends harmoniously into the interior design.



Inplana LED recessed luminaire

Inplana and Onplana LED downlights are the optimum lighting solution for nearly all office applications. Thanks to their modern, minimalist design these flat downlights blend harmoniously into all styles of architecture and emit planar, glare-free light when mounted on walls and ceilings.



Lumega IQ

Beautiful and smart cities have a clever ally: Lumega IQ LED. Be it main road, car park or residential area – the highly flexible luminaire range brings excellent light to any application area. Its consistently minimalist, modern design blends harmoniously into any environment while state-of-the-art technologies guarantee maximum efficiency and sustainability. Lumega IQ LED is also ideally equipped for the future thanks to IoT interface networking capability.