

## PROJECT: LIDL LOGISTIKZENTRUM



### Project information

City: 4904 AW Oosterhout / Netherlands

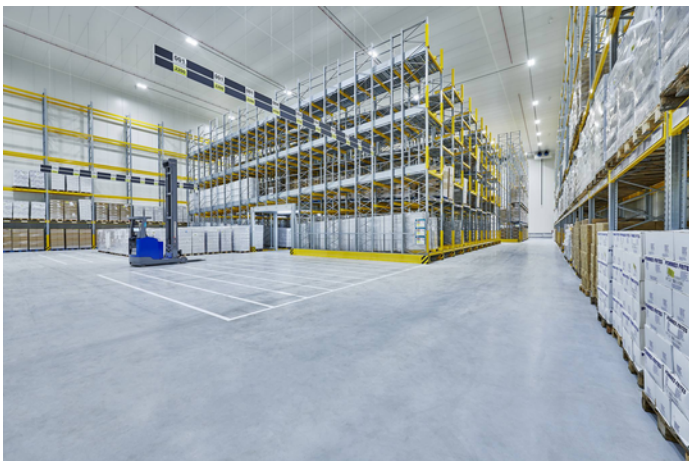
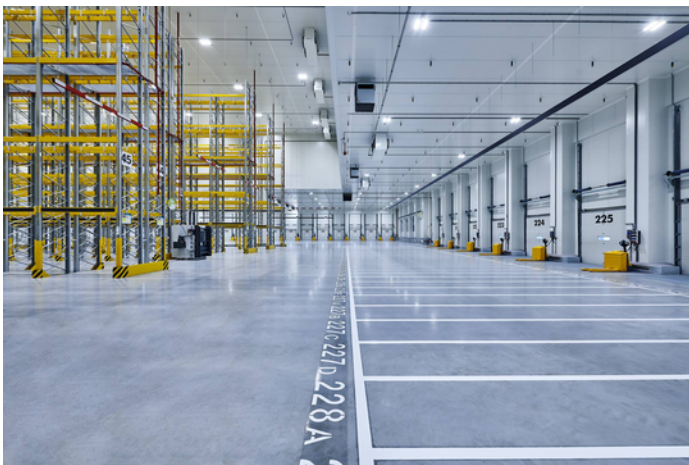
---

# PROJECT DETAILS

## Project images







## Products used



### **Inperla Ligra Plus C05 LED downlight ceiling cutout Ø 140 mm**

Refurbishing was never so simple as with the easy-mounting and flexible Ligra Plus LED. With the cladding covers, the luminaire fits into nearly all existing ceiling cutouts and if required can be connected via mains through-wiring from luminaire to luminaire to save time. The Ligra Plus LED is available with different luminous flux packages and beam characteristics for the optimal illumination of a wide variety of rooms. All versions fulfil maximum demands for visual comfort and energy efficiency. And thanks to the diverse design versions, the Ligra Plus LED always blends harmoniously into the interior design.

---



### **Mirona Fit LED highbay luminaire**

Mirona Fit LED is the perfect lighting solution for challenging industrial surroundings. Thanks to its wide range of versions it is suitable for e.g. use in warehouses and distribution halls and the heavy industry and foodstuff industry, and emits reliable, uniform, glare-free light.

---