



## PROJECT: HAGEBAUMARKT STIEPER GMBH & CO. KG

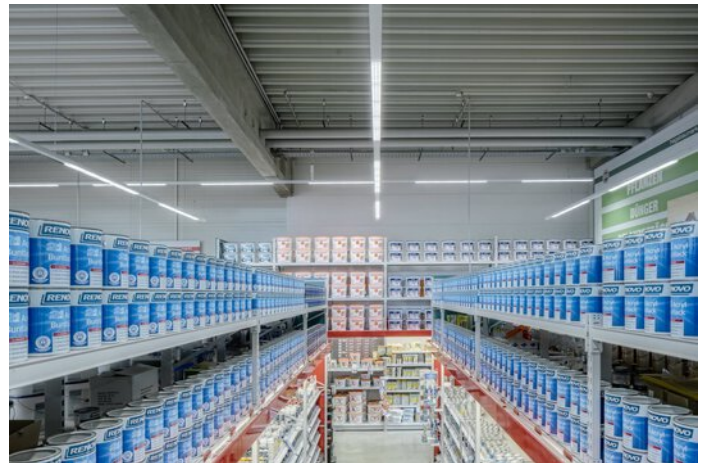


### Project information

City: 24589 Nortorf / Germany

# PROJECT DETAILS

## Project images





## Products used



### **Mirona Fit LED highbay luminaire**

Mirona Fit LED is the perfect lighting solution for challenging industrial surroundings. Thanks to its wide range of versions it is suitable for e.g. use in warehouses and distribution halls and the heavy industry and foodstuff industry, and emits reliable, uniform, glare-free light.

---