

## PROJECT: LANDKREISAMT LUDWIGSLUST-PARCHIM



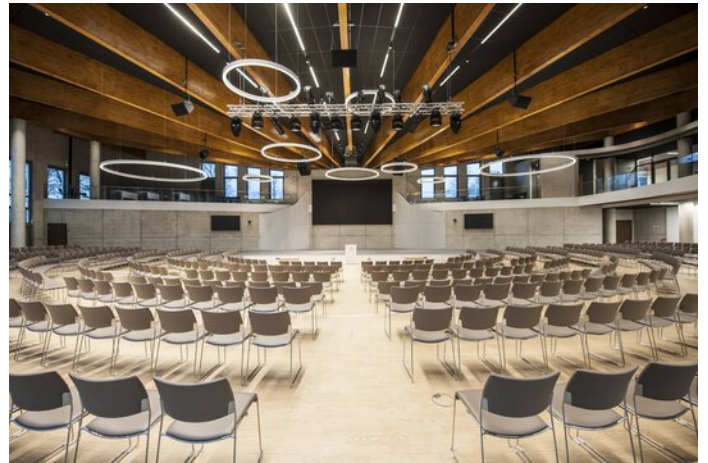
### Project information

City: 19370 Parchim / Germany

---

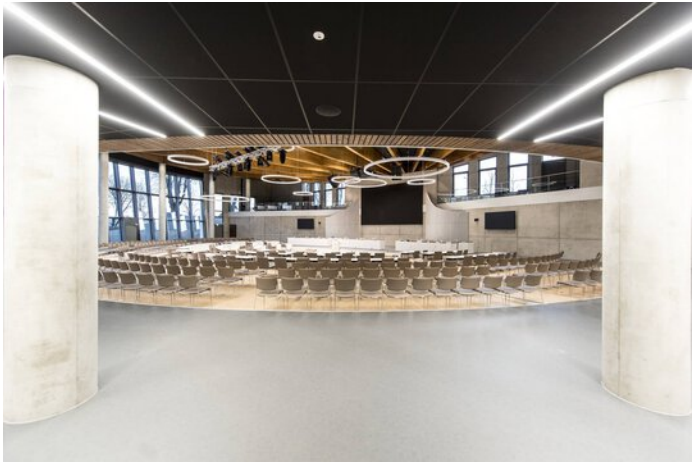
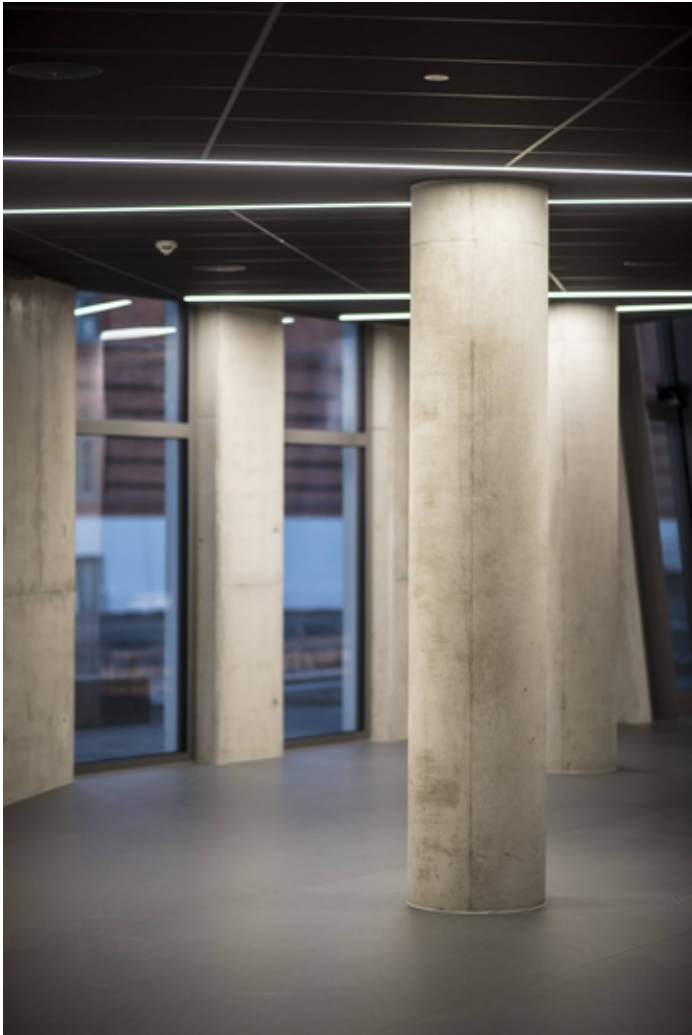
## PROJECT DETAILS

### Project images

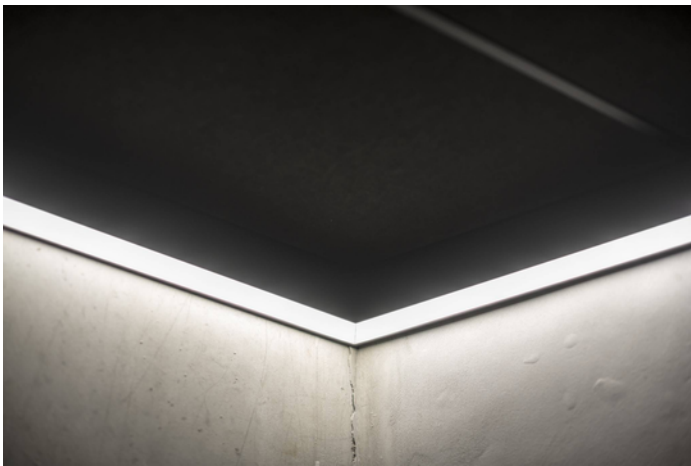
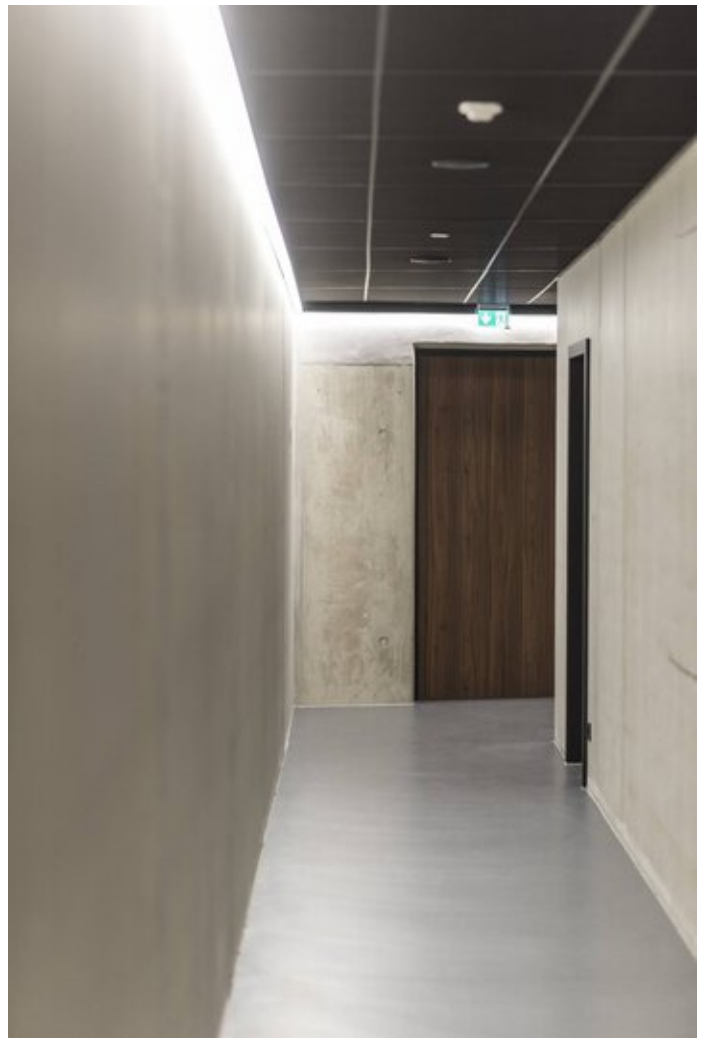
















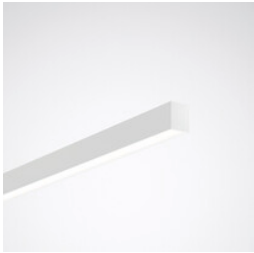
## Products used



### **E-Line NEXT LED modular continuous line**

Still in the portfolio for the refurbishment and expansion of existing systems: the E-Line Fix continuous line system with trunking that has been tried and tested for many years. This ensures continuity and investment security for our customers and E-Line users - and is what the TRILUX after-sales promise stands for.

---



### **Finea D LED surface-mounted ceiling luminaire**

Holistic solutions instead of patchwork: thanks to versatility in photometrics and installation type, even extensive projects can be realised with a single luminaire range. This creates an attractive, harmonious overall impression.

---