



PROJECT: MEDICLIN KLINIK AM VOGELSANG

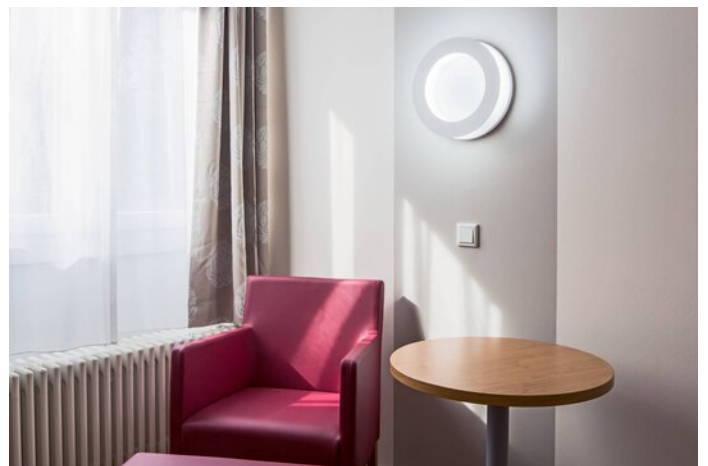


Project information

City: 78166 Donaueschingen / Germany

PROJECT DETAILS

Project images





Products used



Belviso D LED ceiling surface-mounted luminaire

The Belviso luminaire family represents high quality lighting solutions together with glare-free light and unusual lighting effects. The exclusive light frame makes the Belviso Cluster ceiling luminaires unmistakable, creates a unique light appearance and underlines the completely harmonious illumination of the light surface. The colour-illuminated light frame is available optionally and achieves an emotional upgrading of the lighting design. Five expressive alternatives mean that diverse, room-specific or individual colour codings can be selected.



Inperla Ligra C07 LED downlight ceiling cutout Ø 210 mm