

PROJECT: PRIMARSCHULE WIL



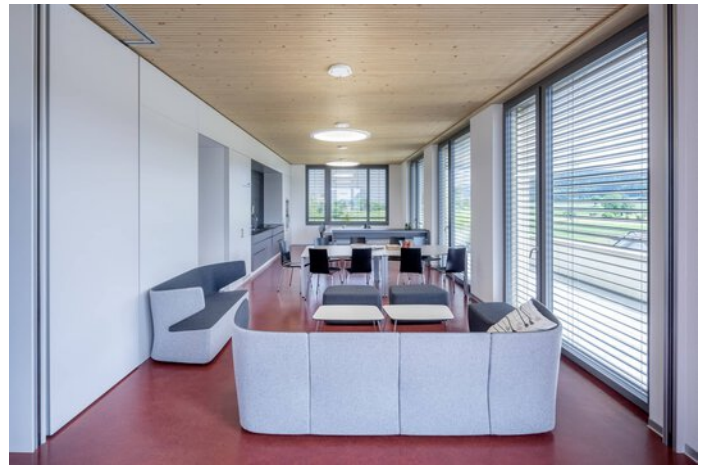
Project information

Architect: Züger Architekten AG, Dübendorf

City: 8600 Dübendorf / Switzerland

PROJECT DETAILS

Project images





Products used



Solvan Flow C LED recessed luminaire

Everything is possible, from single luminaires as recessed, surface-mounted and suspended versions to continuous lines with integrated emergency light function.
