

PROJECT: SHOWROOM AUTO STEINER ZÜRICH AG

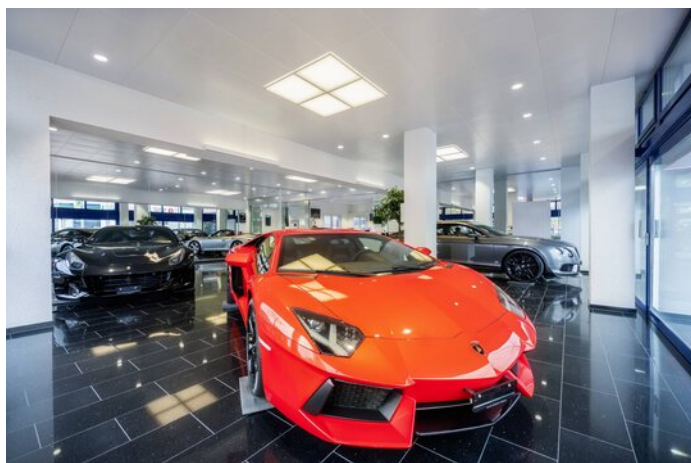


Project information

City: 8051 Zürich / Switzerland

PROJECT DETAILS

Project images





Products used



Belviso C2 LED ceiling-recessed luminaire

The Belviso luminaire family represents high quality lighting solutions together with glare-free light and unusual lighting effects. The exclusive light frame makes the Belviso Cluster ceiling luminaires unmistakable, creates a unique light appearance and underlines the completely harmonious illumination of the light surface. The colour-illuminated light frame is available optionally and achieves an emotional upgrading of the lighting design. Five expressive alternatives mean that diverse, room-specific or individual colour codings can be selected.



Inperla Ligra Plus C05 LED downlight ceiling cutout Ø 140 mm

Refurbishing was never so simple as with the easy-mounting and flexible Ligra Plus LED. With the cladding covers, the luminaire fits into nearly all existing ceiling cutouts and if required can be connected via mains through-wiring from luminaire to luminaire to save time. The Ligra Plus LED is available with different luminous flux packages and beam characteristics for the optimal illumination of a wide variety of rooms. All versions fulfil maximum demands for visual comfort and energy efficiency. And thanks to the diverse design versions, the Ligra Plus LED always blends harmoniously into the interior design.
